



Centrifugal Lube Oil Cleaners For removal of harmful dirt from engine oil



Automotive Application

TATA
 ASHOK LEYLAND
 EICHER
 AMW
 MAN
 VOLVO
 MAHINDRA NAVISTAR
 HINO
 FORCE MOTORS

Benefits to the end users

- ◆ No replacement element
- ◆ Extended lube oil drain interval
- ◆ Enhanced engine life
- ◆ Finest filtration (5 micron & below)
- ◆ Increased oil filter life
- ◆ One time investment



ISSUE 7 OCTOBER 2012

MAK TECHNO-BITES
(An Initiative of P&AD team)



MAK
LUBRICANTS

MAK CI 4 Plus

Recommended for use in high performance diesel engines including the latest low emission engines fitted with EGR technology as well as Turbocharged / naturally aspirated diesel engines, both on-highway and off-highway, running on low sulfur diesel or conventional high sulfur diesel fuel.

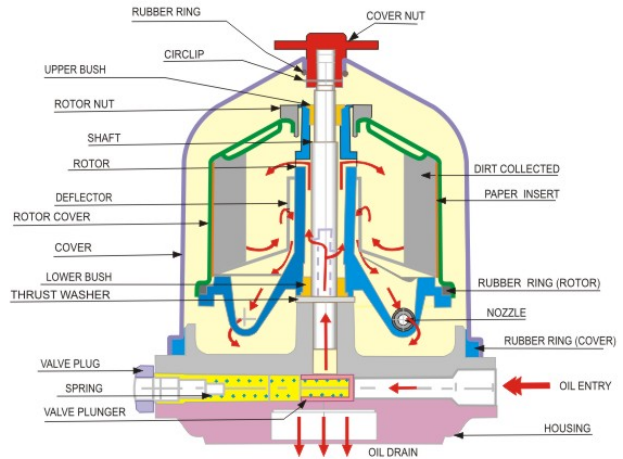
- ❖ USP- MAK CI-4 Plus has been successfully field tested for 1 lakh km in Hino Engine (185 BHP, Turbocharged, Centrifugal filter) fitted buses at VRL Logistics.
- ❖ Certifying Party: VRL Logistics

**Largest installation base in India with 5 OEMs
(Kirloskar, Greaves, Mahindra, BEML and Cummins) using our product**

Centrifugal Lube Oil Cleaner Working Principle

Centrifugal Lube Oil Cleaner operates on the Hero turbine principle.

Oil enters the centrifuge under pressure and passes into the rotor through hollow rotor shaft. The oil pressure and flow is converted in rotational energy as the oil escapes through the jets, producing speed to 6000 RPM and above. The resultant centrifugal force removes dirt from the engine oil depositing it on the inner wall of rotor in a dense cake form. Clean oil drains back directly to the engine oil sump by gravity.

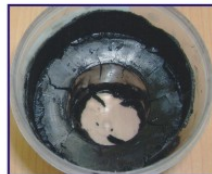


Centrifuge Installation in A. Leyland Hino Engine



Installation of Centrifuge in Tata 697 Engine

Sludge Collected in the rotor



“Oil analysis results have shown the centrifuge has maintained levels of soot, insolubles, viscosity and wear metals within the manufacturers' specifications over the previous drain intervals and beyond, which in some instances has doubled the oil drain interval on the emission complaint engines.”

Centrifugal Lube Oil Cleaner acts as
“*Engine Conditioning System*”

SELECTION CHART

Centrifuge Model	Nominal Flow Rate	Dirt Holding Capacity	Engine Oil Sump Capacity	Engine Models
LC 10	110 LPH	75 gms	5-14 ltrs.	Mahindra, TATA 3L, TATA 497, Tempo Traveller, IVECO, Ecomet etc. 4 cylinder engines
LC 20	180 LPH	150 gms	15-30 ltrs.	TATA 697, TATA Cummins 6 BT, Cummins 24 Valve, Eicher, Ashok Leyland, AMW, Mahindra Navistar, MAN, Volvo, Renault, Hino, International etc. engines

Bhagyashree Accessories Pvt. Ltd.,

S. No. 44/32, Narhe Industrial Area, Pune 411041 (MS)
 Telefax : 020 - 6470 0167 Email : marketing@baplpune.in / sales@baplpune.in
 URL : www.centrifugallubeoilcleaner.com



DEALER / DISTRIBUTOR :